

ELIGIBILITY

Bachelor's Degree or equivalent with at least 50% aggregate marks or equivalent CGPA in any discipline from a University recognized by Association of Indian Universities or AICTE. If you are appearing for the final year of graduation in 2024, you too are eligible. Such an admission is provisional and will stand cancelled if you do not have 50% aggregate marks in the qualifying examination once the results are published.

APPLICATION

Online: Application form can be filled and submitted on our website along with an online payment of Rs. 1000/-.

Visit: www.apply.jaipuria.ac.in



←
Scan To Apply

CORPORATE OFFICE

Jaipuria Institute of Management
1/3, Block 1, Plot No.3, WHS Timber Market,
Kirti Nagar, Near Mayapuri Chowk, New Delhi- 110015
M. +91 8800495724
E. admissions@jaipuria.ac.in

NOIDA

Jaipuria Institute of Management
A-32A, Sector 62, Noida 201 309
M. +91 9891089621, 9999864454
E. noida@jaipuria.ac.in



SELECTION PROCESS

The selection to the Post Graduate Diploma in Management programme is purely based on the cumulative performance in CAT*/CMAT/MAT/XAT score followed by group discussion and personal interview.

Due weightage is also given to past academic achievements and work experience respectively.

SCHOLARSHIP**

We view education not only as a gateway to personal development, but also as a pathway for improving the society. We encourage meritorious students with a number of scholarships. At Jaipuria we offer scholarship upto 3 Lacs based on Management aptitude exam.

LUCKNOW

Jaipuria Institute of Management
Vineet Khand, Gomti Nagar,
Lucknow 226 010
M. +91 73888 87872
E. lucknow@jaipuria.ac.in

JAIPUR

Jaipuria Institute of Management
1, Bambala Institutional Area,
Pratap Nagar, Sanganer, Jaipur 302 033
M. 91 9602010333, 9982533338
E. jaipur@jaipuria.ac.in

INDORE

Jaipuria Institute of Management
Campus: Dakachya, Indore Dewas Highway,
Near Shipra Naka, Indore 453 771
M. +91 +91 97525 93334/3335
E. indore@jaipuria.ac.in

PLACEMENT REPORT

2021-23



2023 GRADUATING BATCH OUTSHINES WITH EXCEPTIONAL OFFERS, SETTING A NEW MILESTONE IN PLACEMENTS A GLIMPSE

Jaipuria Institute of Management has achieved a remarkable feat in its 2023 placement season with over 1000 offers being made to a batch strength of 930 students, surpassing its previous placement record.

The placement season witnessed participation of over 300+ recruiters, including 110 new recruiters. The highlight of the season was the increase in multiple job offers, with over 100+ students receiving them in leading corporates and startups.

Overall consulting sector emerged as the top recruiter, accounting for 26.37% of all offers, followed by financial services and banking.

930
BATCH
STRENGTH

1000+
OFFERS
MADE

300+
TOTAL RECRUITERS
VISITED

100+
STUDENTS WITH
MULTIPLE OFFERS

110+
NEW
RECRUITERS

LEADING AT EVERY FRONT

The placement record at Jaipuria Institute of Management showcases an increasing trend of students being placed in new age profiles like Business Analytics, Digital Marketing, Supply Chain Management, and Operations. This trend is a testament to the practical training, industry exposure, and academic excellence that the institute provides to its students. Jaipuria's strong industry partnerships also contribute to providing students with attractive job opportunities in these emerging domains.

FINANCE

Credit, Risk, Advisory, Portfolio Management, Financial Operations, Investment Banking, Financial Modeling, Spend Analytics, Digital Banking, Risk Management, Enterprise Planning, Trade Financing, Financial Compliance Management

OPERATIONS

Supply Chain Consulting, Procurement Advisory, Service Operations, Analyst (Logistics), Retail Operations

ANALYTICS

Business Analyst, Analytics Practitioner, Data Analyst, Artificial Intelligence, Machine Learning, Cloud Specialist

MARKETING

Product Management, Research Analyst, Product Consultant, Customer Insights, Branding, Trade Marketing, Digital Marketing

HUMAN RESOURCE

HR Transformation, Talent Acquisition, HR Analytics, HRBP, L&D, PMS, HR Consultants

SOARING HIGH!

AVERAGE CTC

INR 12.34 LPA
FOR THE TOP 10%

INR 11.08 LPA
FOR THE TOP 20%

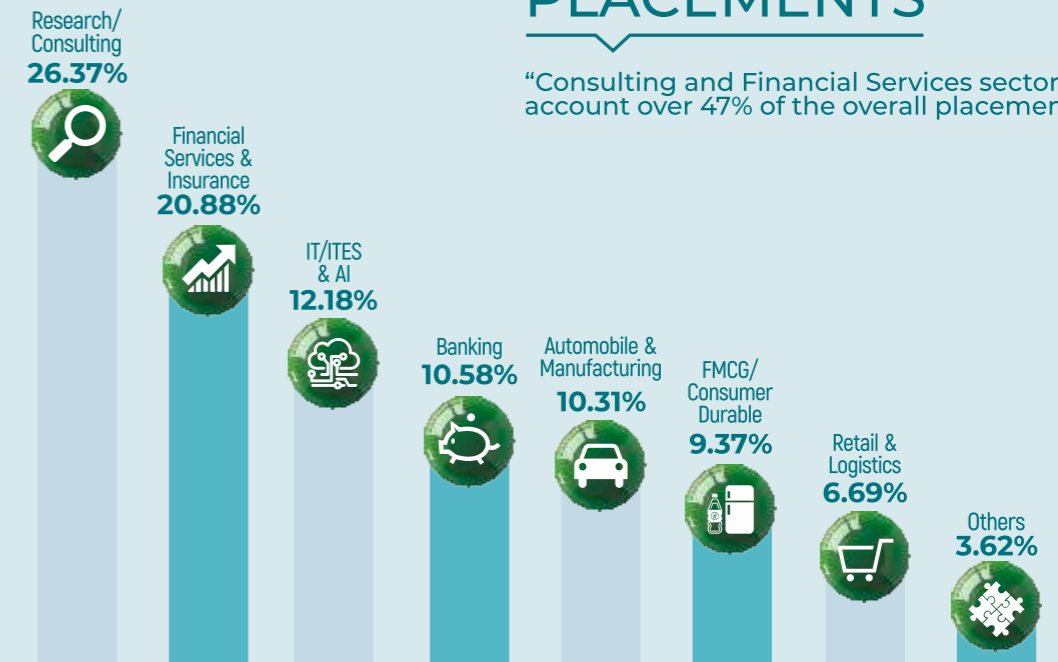
INR 9.96 LPA
FOR THE TOP 50%

INR 8.95 LPA
OVERALL AVERAGE



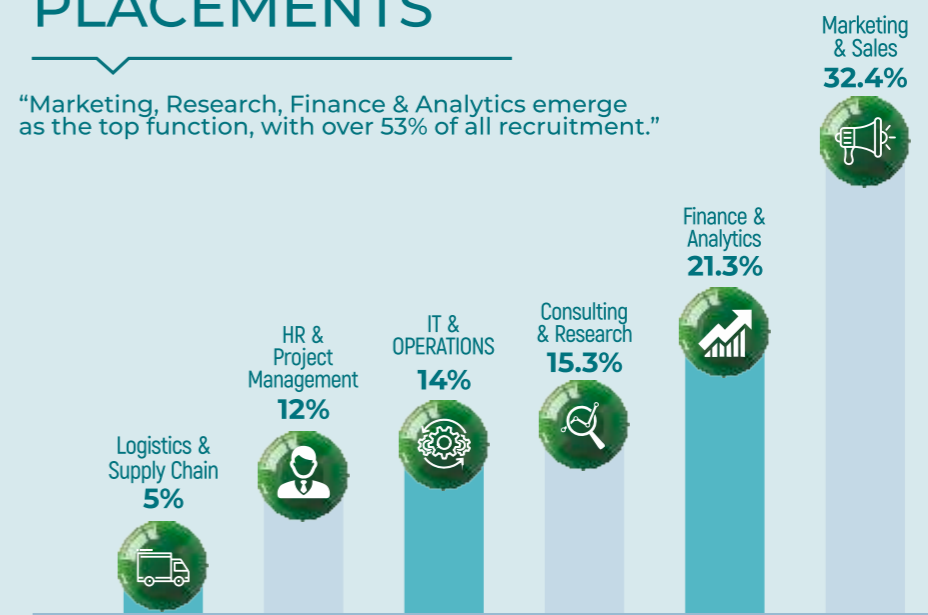
SECTOR WISE PLACEMENTS

“Consulting and Financial Services sector account over 47% of the overall placements.”

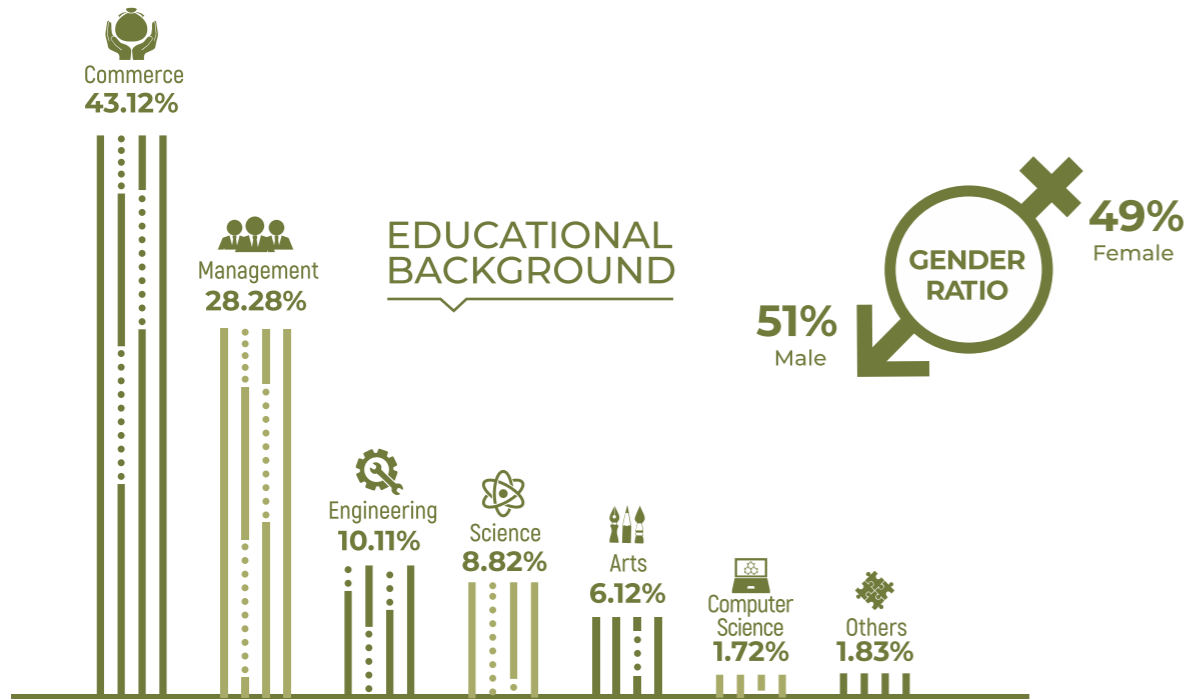


FUNCTION WISE PLACEMENTS

“Marketing, Research, Finance & Analytics emerge as the top function, with over 53% of all recruitment.”



BATCH PROFILE 2021-23



MAJOR RECRUITERS

Deloitte	78	pwc	29	ICICI Bank	34	MPFC BANK	25
Piramal	23	HCL	20	eClerx	17	Bandhan Bank	17
ANZ	14	SBI card	12	POLYCAB	11	Bank White	11
EVALUESERVE	11	S&P Global	11	BAJAJ HOUSING FINANCE LIMITED	10	asianpaints	10

OUR PROMINENT RECRUITERS



and many more.....